

MODERN 2 BEDROOM APARTMENT WITH AN IDEAL LOCATION!!!!
4 / 30 Rowland Avenue, Wollongong

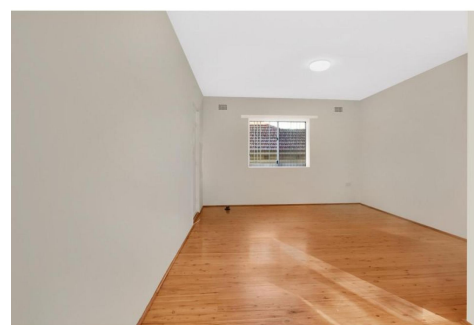
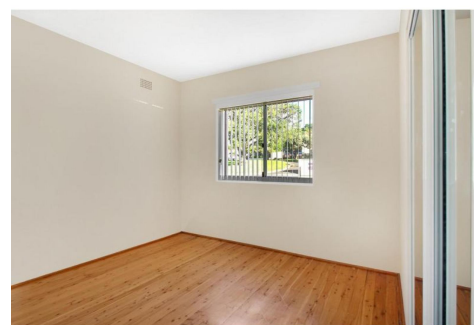
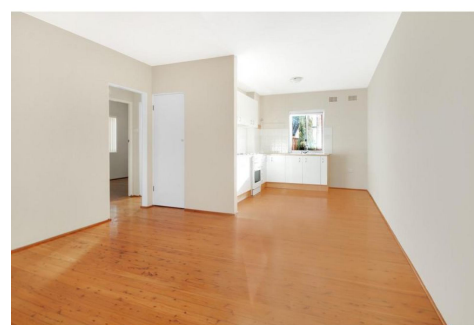


This well loved, spacious apartment is located in the heart of Wollongong's CBD. Close to public transport including the train station, schools, parks, restaurants and shopping centres.

Situated within a small and well maintained complex with a ramp for wheelchair access.

The first thing you will notice upon entering the property is the spacious open-plan living area. Complete with polished wooden flooring, a large window allowing for plenty of fresh air and natural light to fill the area and a good-sized linen closet for extra storage.

The kitchen has a modern design with wooden finishes....



Property Management

phone 0242208090
mobile 0480051112

Listing ID: #R2-4939344